

Annex F3

Monitoring Results for Noise

Table F3.1 Data for Noise Monitoring at Station NMS-CA-1A during Normal Working Hours (0700-1900 hours)

Date & Time	L _{eq} (5min)	L ₁₀	L ₉₀	L _{eq} (30min)
8/3/2023 13:11	66.4	69.4	60.2	66.6
8/3/2023 13:16	65.1	66.1	60.5	
8/3/2023 13:21	66.1	69.2	61.0	
8/3/2023 13:26	65.0	67.3	61.2	
8/3/2023 13:31	66.4	69.1	61.4	
8/3/2023 13:36	69.0	72.3	62.4	
8/9/2023 14:46	62.5	65.7	57.7	62.5
8/9/2023 14:51	62.8	65.8	57.4	
8/9/2023 14:56	61.7	63.9	57.1	
8/9/2023 15:01	60.5	62.8	58.1	
8/9/2023 15:06	64.7	66.4	58.8	
8/9/2023 15:11	61.5	64.0	57.8	
8/15/2023 14:29	64.5	67.1	60.7	64.2
8/15/2023 14:34	63.9	66.5	60.4	
8/15/2023 14:39	62.9	65.9	59.3	
8/15/2023 14:44	64.5	67.3	59.8	
8/15/2023 14:49	65.0	67.4	60.1	
8/15/2023 14:54	64.2	66.6	60.9	
8/21/2023 9:08	65.2	68.1	59.9	66.7
8/21/2023 9:13	66.8	70.1	59.6	
8/21/2023 9:18	68.0	71.7	60.7	
8/21/2023 9:23	66.9	68.9	60.2	
8/21/2023 9:28	65.7	68.9	60.2	
8/21/2023 9:33	67.1	70.6	60.9	
8/26/2023 13:11	67.1	68.9	63.1	67.0
8/26/2023 13:16	66.0	68.0	63.1	
8/26/2023 13:21	67.4	69.3	63.8	
8/26/2023 13:26	67.9	68.3	63.4	
8/26/2023 13:31	67.0	69.1	64.0	
8/26/2023 13:36	66.1	67.7	62.4	

Figure F3.1 Graphical Presentation for Noise Monitoring at Station NMS-CA-1A

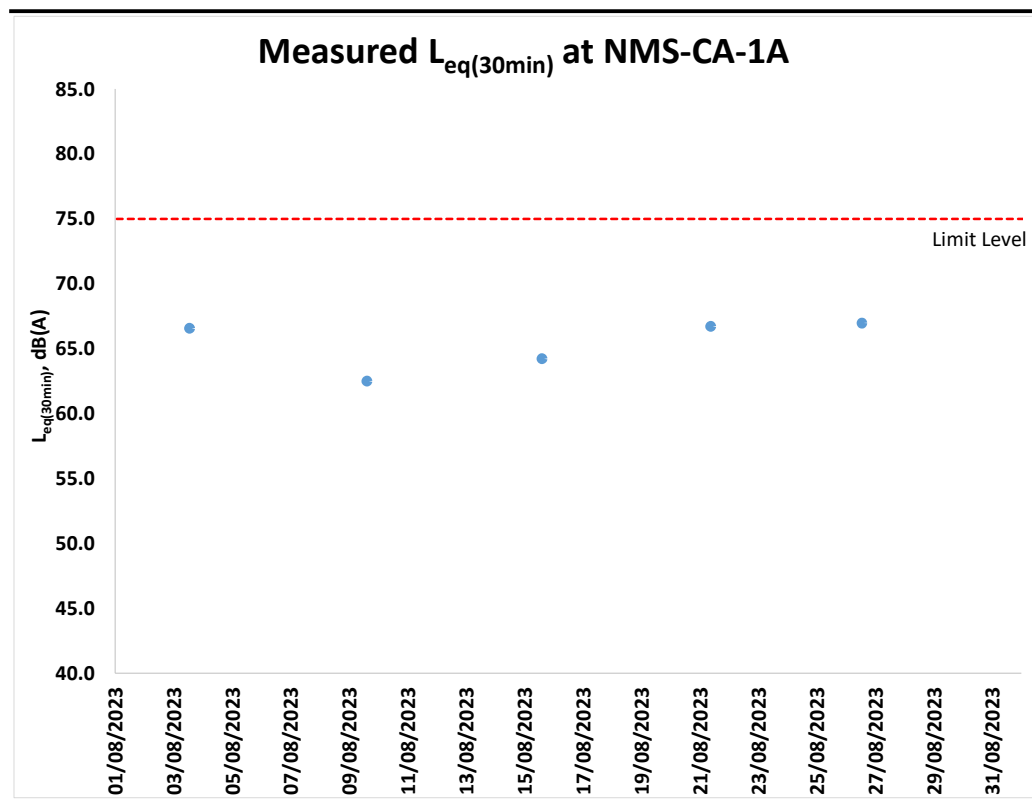


Table F3.2 Data for Noise Monitoring at Station NMS-CA-4 during Normal Working Hours (0700-1900 hours)

Date & Time	L _{eq} (5min)	L ₁₀	L ₉₀	L _{eq} (30min)
8/3/2023 13:50	66.7	67.7	65.2	66.7
8/3/2023 13:55	68.3	70.3	64.7	
8/3/2023 14:00	65.8	67.3	64.0	
8/3/2023 14:05	66.6	68.2	63.5	
8/3/2023 14:10	66.6	68.8	63.9	
8/3/2023 14:15	66.0	67.7	64.1	
8/9/2023 13:25	66.1	67.4	64.5	66.5
8/9/2023 13:30	66.0	67.2	64.4	
8/9/2023 13:35	66.8	68.5	64.8	
8/9/2023 13:40	67.0	68.3	65.0	
8/9/2023 13:45	66.5	67.7	65.3	
8/9/2023 13:50	66.6	67.8	64.9	
8/15/2023 13:45	70.5	71.8	68.4	68.8
8/15/2023 13:50	68.8	70.8	65.7	
8/15/2023 13:55	67.8	69.5	65.5	
8/15/2023 14:00	68.1	69.9	65.6	
8/15/2023 14:05	68.8	70.9	66.4	
8/15/2023 14:10	68.5	70.6	65.7	
8/21/2023 9:58	65.3	67.2	63.2	67.0
8/21/2023 10:03	67.0	69.0	63.9	
8/21/2023 10:08	66.2	67.6	64.1	
8/21/2023 10:13	66.5	68.7	63.9	
8/21/2023 10:18	68.1	70.2	65.0	
8/21/2023 10:23	68.2	70.6	65.2	
8/26/2023 13:47	67.9	69.2	66.3	67.1
8/26/2023 13:52	68.3	69.5	66.0	
8/26/2023 13:57	67.1	68.9	65.0	
8/26/2023 14:02	66.6	68.8	63.6	
8/26/2023 14:07	66.7	69.0	63.9	
8/26/2023 14:12	65.3	66.7	63.7	

Figure F3.2 Graphical Presentation for Noise Monitoring at Station NMS-CA-4

